



Automatic, Fast & Thorough Test Automation of Flash Memory Cards

SanDisk Israel QA laboratory uses TestShell

Gilad Chitayat,
VP Sales & Marketing,
QualiSystems

August 12, 2009

1



Agenda

Review QualiSystems' Automation platform
by presenting SanDisk's test case solution

- Problem Description
- Solution – High level
- Solution – In depth
- Conclusion



Problem Description

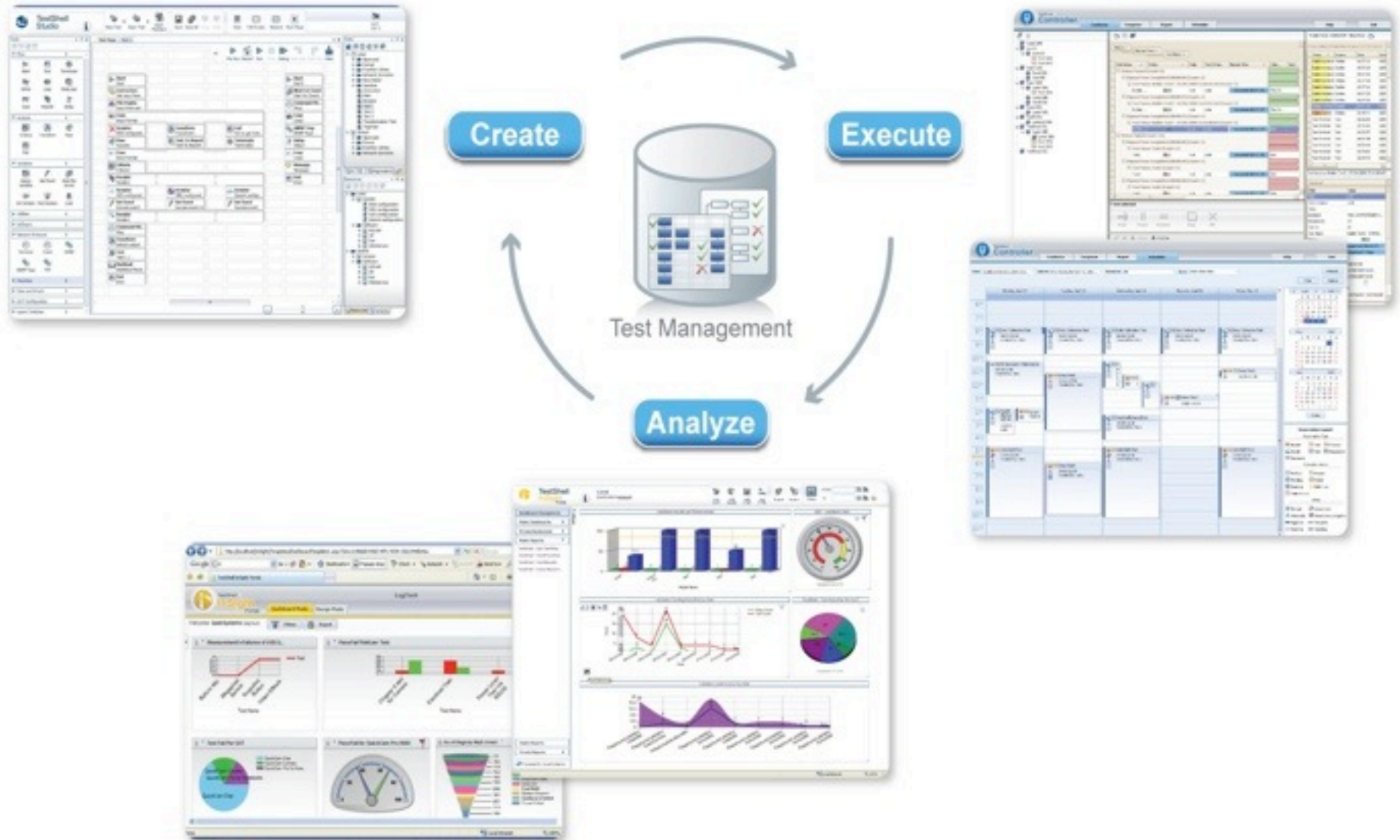
- Testing Flash memory cards and Chips
- Testing procedures include: (partial list)
 - Format / Partition
 - Firmware setting
 - Hardware measurements (i.e. Power dissipation)
 - Data read / write cycles error and timing read
 - API Software tests
 - Performance tests
 - Stress tests
 - Test on Customer/Partner platforms



Problem Description cont.

- Single test cycle duration can take days
- Complete test cycle **can reach a month** per product
- Combination of software and hardware in tests forced manual intervention
- Manual result collection (from ~60 stations)
- Manual troubleshooting of run failures
- Manual data aggregation and reporting (up to an additional week)

TestShell Solution – High Level





Solution – High Level

- Cover all test types through **one system**
- Manage all tests in a **central repository**
- Set up **multiple, parallel** testing stations
- **Smart test allocation** to run the cycle
- Automatically **collect all results** to the database
- Allocate **manpower** to create & improve tests, rather than execute & document their results

TestShell Builder

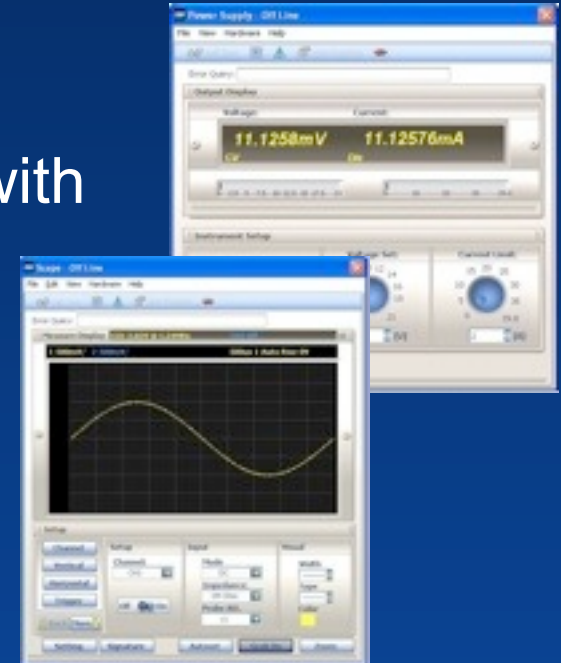
The screenshot displays the TestShell Studio interface, which is used for building test cases. The main workspace shows a test flow diagram for 'Test 1'. The flow starts with a 'Start' block, followed by an 'Instruction' block (Get input from...), a 'File Engine' block (Input from xml), a 'Case' block (Input format), a 'Scripter' block (IXIA configurati...), a 'Pass' block (Success), another 'Case' block (Input format), a 'Criteria' block (Criteria1), a 'Parallel' block (Parallel1), a 'Scripter' block (N2X configurati...), a 'Set Event' block (Success event...), another 'Parallel' block (Parallel1), a 'Command Sh...' block (Ping), a 'Transform' block (Extract output), a 'Test' block (Test_2_1), a 'MatShell' block (Statistical Proce...), and finally an 'End' block (End1). The right side of the interface shows a 'Tests' tree view with a hierarchy of folders and test cases, including 'Local', 'Approved', 'Formal', 'Function Library', 'Network Scenarios', 'New Folder', 'Sandbox', 'Instruction', 'Main', 'Random', 'Test 1', 'Test 2', 'Test 3', 'Transformation Test', 'TrapTest', 'Shared', 'Approved', 'Formal', 'Function Library', and 'Network Scenarios'. The bottom right corner shows 'Resources' and 'Variables' tabs.



TestShell Builder

Wizard-driven, Point-and-Click Test Creator

- At SanDisk
 - Set test sequences which interface with
 - Power measurement
 - Scope
 - Logic analyzer
 - Pattern generator
 - Partner\customer platform
 - Interfaces with SanDisk's API DLL
 - Define logic, loops, variables and more...
 - Define troubleshooting procedures



TestShell Runner

The screenshot displays the TestShell Runner application interface. The top bar includes the logo and navigation icons for 'Open Test', 'Open Playback', 'Report Query', 'View', 'Full Screen', and 'Restore'. The main window is divided into several panels:

- Execution Details:** Shows 'Execution Parameters' with fields for UUT, Serial Number (AXI8273), Version (3), Part Number (BGN101), and Batch Number (2). It also has checkboxes for 'Save Report', 'Open Report', and 'Record to Playback File'.
- Execution Control:** Contains buttons for 'Run', 'Stop', 'Debug', 'Step In', 'Step Out', 'Clear', and 'Release'.
- Execution Log:** Displays 'Execution Information' with a timestamp of 16:33:06 and a 'Passed' result. Below is a table of execution steps.
- Test 1:** A central diagram showing the test flow with steps like 'Start', 'Instruction', 'File Engine', 'Case', 'Scripter', 'Pass', 'Criteria', 'Parallel', 'Command...', 'Transform', 'Test', 'MatShell', and 'End'.
- Tests:** A tree view on the right showing a hierarchy of tests under 'Local' and 'Shared' categories.
- Regressions:** A tree view showing regression tests like 'Version 1', 'Version 2', and 'Version 3'.
- Variables:** A panel at the bottom right showing 'Group By: Tool' and 'User Defined' variables like 'CommandShell_Session' and 'Event1'.

ID	Time	Step	Status	Result
3	16:33:07	Get input from user	Completed	
4	16:33:08	Input from xml	Completed	
5	16:33:08	Input format	Started	
6	16:33:10	IXIA configuration1	Completed	
7	16:33:10	Success	Passed	✓
8	16:33:10	End Input format	Completed	
9	16:33:10	Criteria1	Passed	✓
10	16:33:10	Parallel1	Started	
11	16:33:11	MRV configuration1	Completed	
12	16:33:11	Wait For Event1	Completed	
13	16:33:11	Ping1	Started	



TestShell Runner

Fast, Fully Automated, Test Runner

- At SanDisk
 - Set & measure current consumption with Power Testing Equipment
 - Set & measure signal and timing behavior through Scope Testing Equipment
 - Activate additional equipment
 - Initiate SanDisk DLLs to format, partition, read, write and more.
 - Collect all results and logs



Reduced test duration from an entire month to 2 days!

TestShell Controller

TestShell Controller

Conductor Composer Report Scheduler Help Exit

Users: QualSystems,tal.z,User1,Use... Stations: Any station,Amiram-K-L,John-... Resources: All Show: Day View Refresh Print Options

Monday, April 13

9 AM
10:00 res PS Analog test
11:00 Test2
12:00 PM
1:00 PCS Switch Controls
12:30-14:30 Created by: tal.z
2:00
3:00 Test2 Mobile Validation test N95 Validation test
res Net VCR Maintenance 15:15-15:50
4:00 Mobile Validation test
5:00 16:45-17:20
6:00 PCS Test1
17:30-18:10
7:00

Reservation Legend

Reservation Type

- Builder
- Studio
- Resource
- Test
- Process
- Regression

Execution status

- PreRun
- Pending
- Running
- Failed to run
- Passed
- Failed
- Didn't run

Other

- Manual
- Automatic
- Approve
- Recurrence
- Recurrence exception
- Tentative

Ready

Monday, August 17, 2009

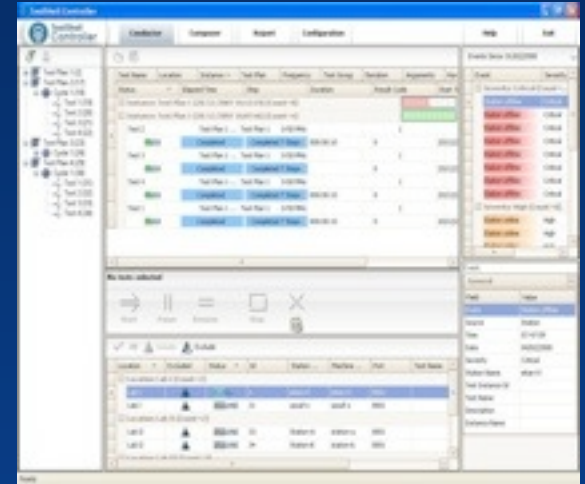


TestShell Controller

Multiple Testing Station Manager, Executor & Optimizer

■ At SanDisk

- Split tests to sub-components and run them on duplicate stations
- Generates execution results & reports
- Automatically correlate tests to stations according to their capabilities and requirements
- Monitor and respond to Events
- Allows remote connectivity to





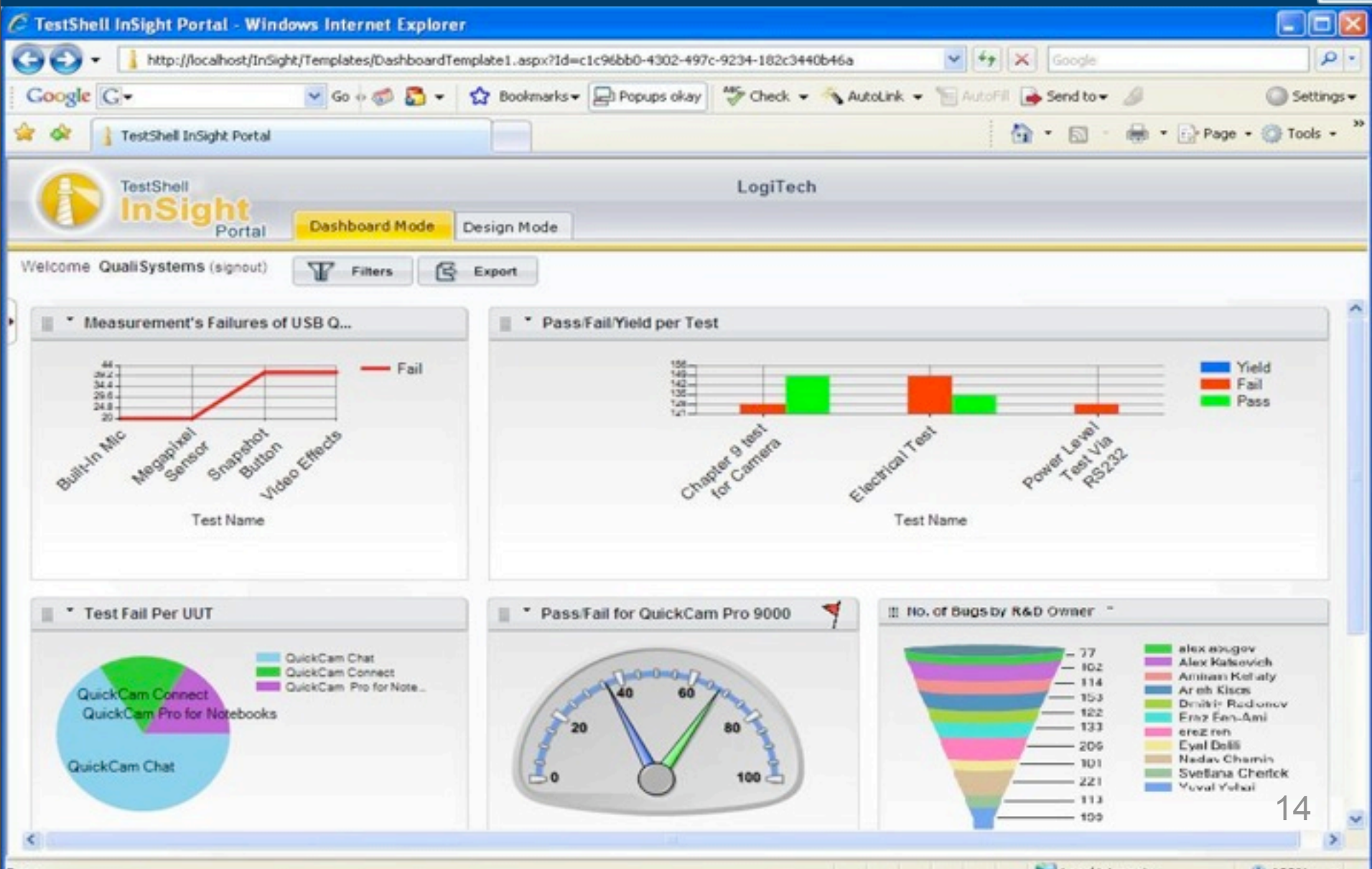
TestShell Controller

Multiple Testing Station Manager, Executor & Optimizer



TestShell InSight

Test Reporting, Business Intelligence & Decision Support Generator





TestShell InSight

Test Reporting, Business Intelligence & Decision Support Generator

- At SanDisk
 - Query the main Data Base to collect results and stats from the multiple test stations
 - Analyze the results to generate summaries, tables and advanced plots.
 - Generate Complex customizable reports per UUT
 - Generate customizable browser-base dashboards

Conclusion

- Reduction of test duration through automation
- Reduction of cycle duration through parallel testing and monitoring automation
- Increase in testing complexity
- Complete executive coverage of testing

Approximate tripling of testing productivity!



“Truly the Next Generation of Test Automation!”



“QualiSystems’ TestShell helped us to address our key challenges, **significantly accelerating our testing process** and increasing productivity of my team. QualiSystems and its TestShell test automation suite allowed us to make a **major leap**. We are able now to **develop complex tests using sophisticated test instruments in a matter of hours**”.

Shahar Bar-Or
R&D Director
SanDisk MHV





Thank you

Visit our website:
www.qualisystems.com

QualiSystems



TestShell Solution – High Level

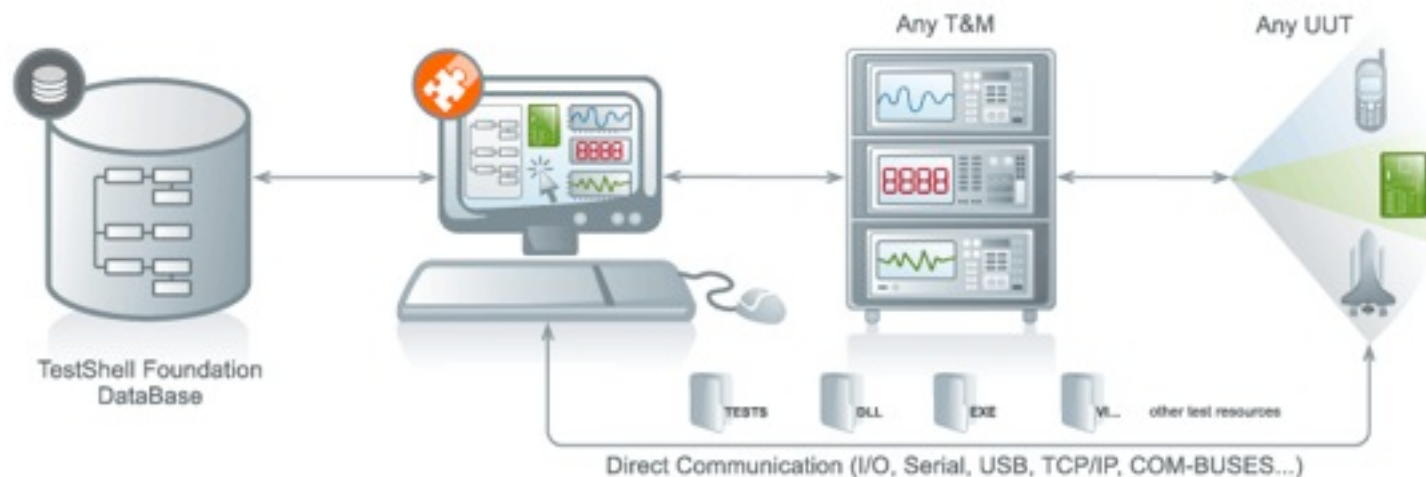


- Set of software applications
- Completely integrated
- Out-of-the-box interfaces with testing equipment
- Cover all software and hardware testing use cases
- Cover all test-related procedures
- Aggregates results to a standard Data Base

TestShell Builder

Wizard-driven, Point-and-Click Test Creator

- Quickly and easily create re-usable standardized functional tests scenarios
- Integrate with Any T&M / Software / Interface
- Develop with no need for programming skills



TestShell Runner

Fast, Fully Automated, Test Runner

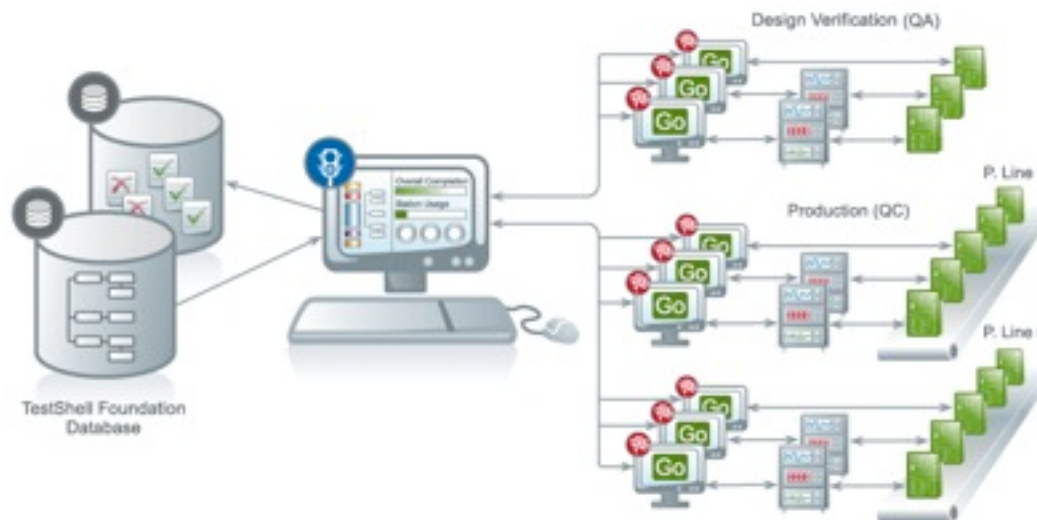
- Execute tests in-house or at **any outsource location**
- **Ensures standardization by preventing unauthorized modifications** to test specifications
- Displays & Collect all test results to the central Data Base



TestShell Controller

Multiple Testing Station Manager, Executor & Optimizer

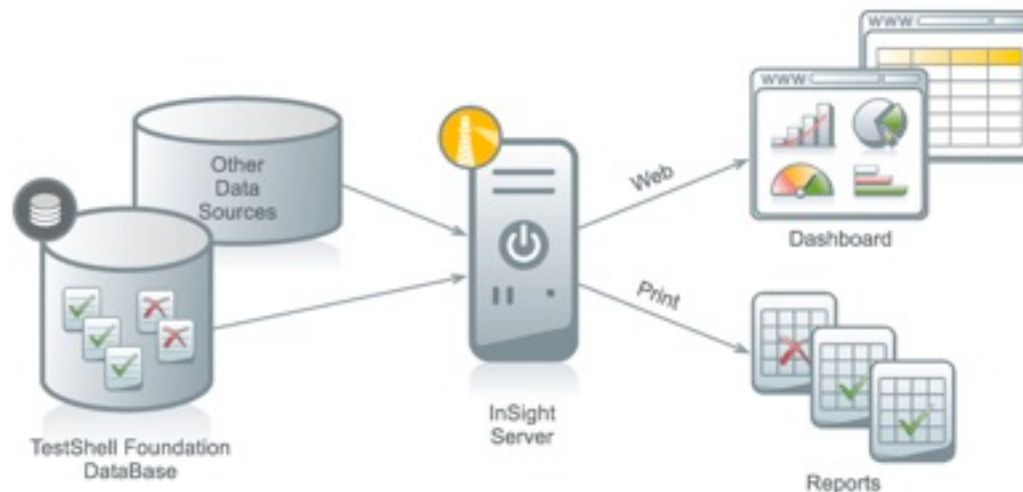
- Run and coordinate tests among multiple stations 24/7
- Optimizes test duration & maximizes station utilization
- Track testing station performance



TestShell InSight

Test Reporting, Business Intelligence & Decision Support Generator

- Display and convey test results and trends on-line and in real-time, running any type of query
- Highly customizable web dashboards and reports



TestShell Foundation

The Heart of the TestShell Suite

- Scalable core engine and central database enabling all TestShell applications to work together
- An essential element in any TestShell implementation

