



You Don't Have to be a Scientist to Clone

Tutorial T3A: Software for Flash 8:30-10:50 Thu Aug 11, 2011

Cloning for Backup, Sharing, & Upgrades

Sean Stead

www.NTICorp.com



How to Make a Perfect Clone

- Cloning duplicates a drive with an exact and bootable image to be deployed from 1 to any number of PC's.
- Cloning is for every level of user starting with simplistic function up to more advanced features:
 - **One-Click Cloning**
 - **Filter Cloning**
 - **Partition Cloning**
 - **Smart Cloning**



Cloning: Why Do I Care?

Internal Drive Upgrade – User can clone the old internal drive and upgrade to a new, usually larger, faster drive via external USB housing,
- Ideally a new, faster SSD !!

Reboot and Restore – computer is restored from a master image
Use: cybercafes, training and educational institutes
Helps ensure the computer will in original clean, working state.

Provisioning new computers – Start with a standardized configuration
No time wasted installing individual applications.
OEM (original equipment manufacturers) and larger companies.



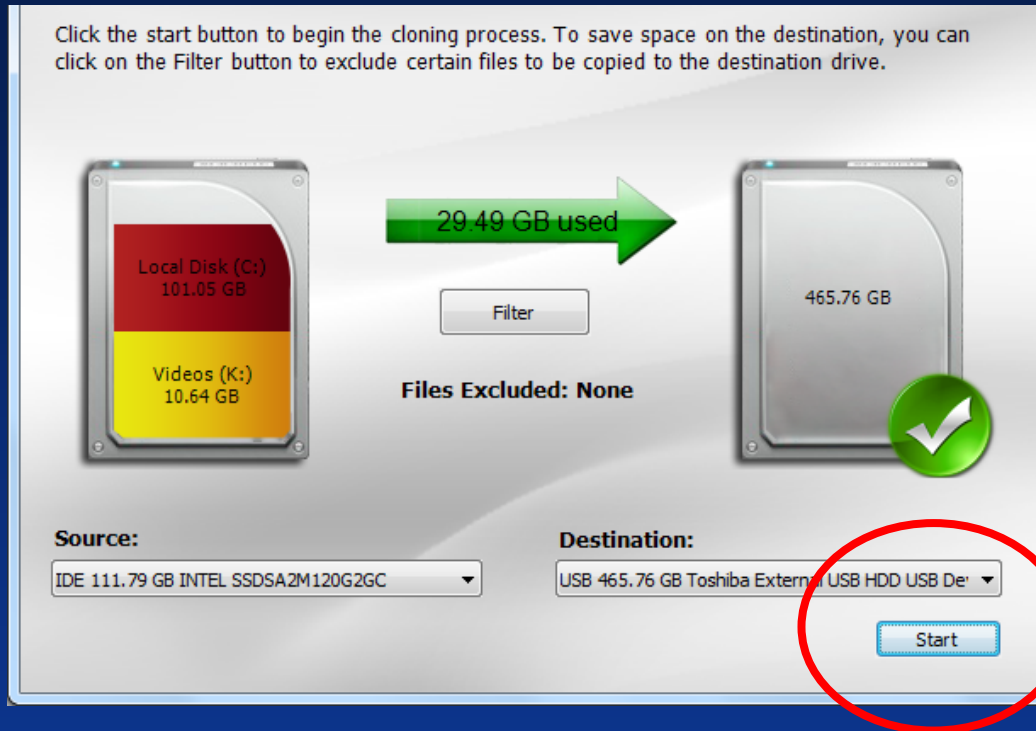
Cloning: Why Do I Care?

Full system backup – A user may create a comprehensive backup of their operating system and installed software.

System recovery – An OEM can provide media that can restore a computer to its original factory software configuration

Transfer to another user – A system sold or given to another employee may be reset by reloading a known, previously-saved image that contains no personal files or information.

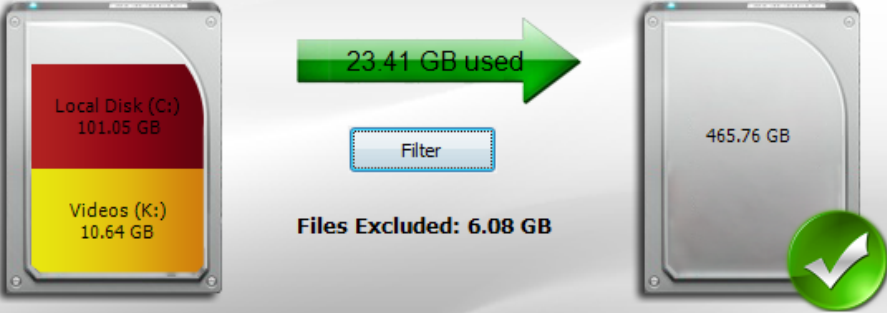
One Click Cloning Example



Single click of the mouse [START] the entire hard drive (i.e. OS, Programs, Data, Partitions, et al) are cloned **exactly** to another drive.

Filter Cloning Example

Click the start button to begin the cloning process. To save space on the destination, you can click on the Filter button to exclude certain files to be copied to the destination drive.



23.41 GB used

Filter

Files Excluded: 6.08 GB

Source: IDE 111.79 GB INTEL SSDSA2M120G2GC

Destination: USB 465.76 GB Toshiba External USB HDD USB De

Start

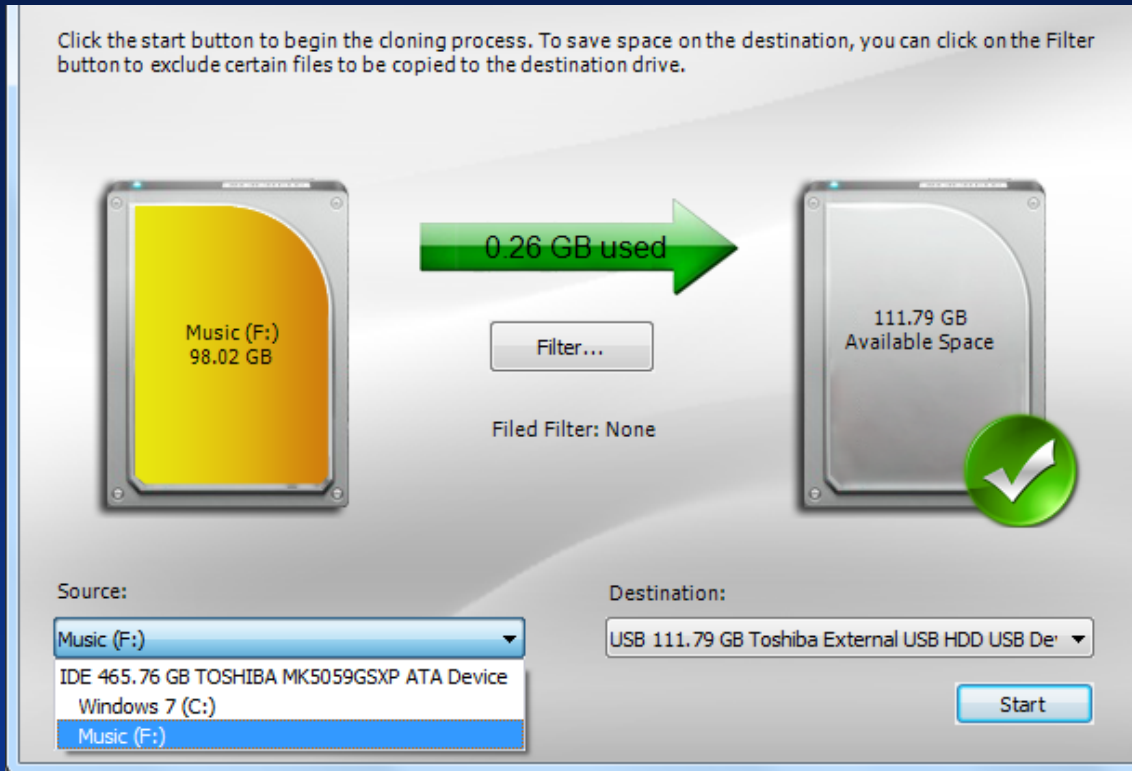
Select the files and folders to exclude from the cloning process.

Name	Size	Date
Local Disk (C:)		
Users		2/15/2011 3:55:33 PM
Public		7/13/2009 11:44:38 PM
Ray		2/25/2011 11:17:56 AM
Contacts		1/25/2011 1:44:58 PM
Desktop		2/25/2011 10:45:10 AM
Documents		2/22/2011 4:55:38 PM
Downloads		1/25/2011 1:44:58 PM
Favorites		1/25/2011 1:44:58 PM
Links		1/25/2011 1:44:58 PM
Music		2/2/2011 5:40:33 PM
Pictures		2/22/2011 2:51:29 PM
Saved Games		1/25/2011 1:44:58 PM
Searches		1/25/2011 1:44:58 PM
Videos		2/25/2011 4:03:42 PM
Standard User		2/15/2011 3:55:47 PM
Programs (E:)		1/25/2011 1:44:58 PM
DATA (F:)		2/25/2011 4:03:42 PM

OK Cancel

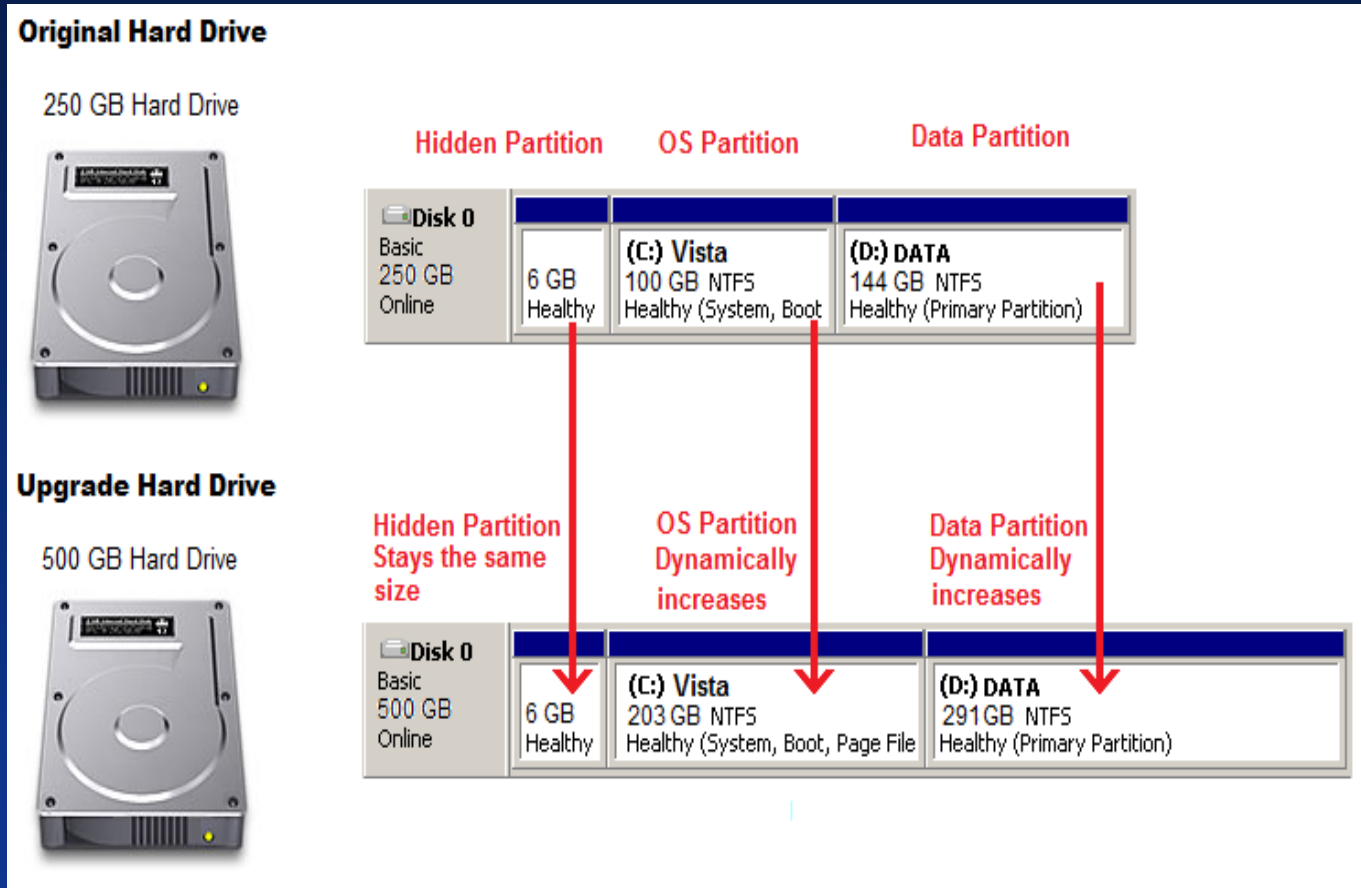
- Exclude certain (e.g.: unused) files from the cloning process
- Use Case: When the target drive is too small for all the source drive's data.

Partition Cloning Example



- Quickly clone a single partition from one drive to another drive.
 - Perfect for cloning just the Operating System partition to an SSD

Smart Cloning Technology



- Smart cloning technology automatically resize in proportion to space
- Use Case: Drive partitions fit onto a **smaller or larger** replacement drive



Key Features Review

One-Click Cloning

Simply click the start button and software should take over. Start the cloning process and copy the entire original hard drive (i.e. OS, Programs, Data, Partitions, etc.) to the new replacement drive. After the cloning process is complete simply swap out the drives and reboot. Windows will boot up normally from the new drive as if nothing ever happened.

Filter Cloning

Allows the user to select specific files to exclude from the cloning process. A perfect solution when the replacement drive is too small for all the source drive's data.

Partition Cloning

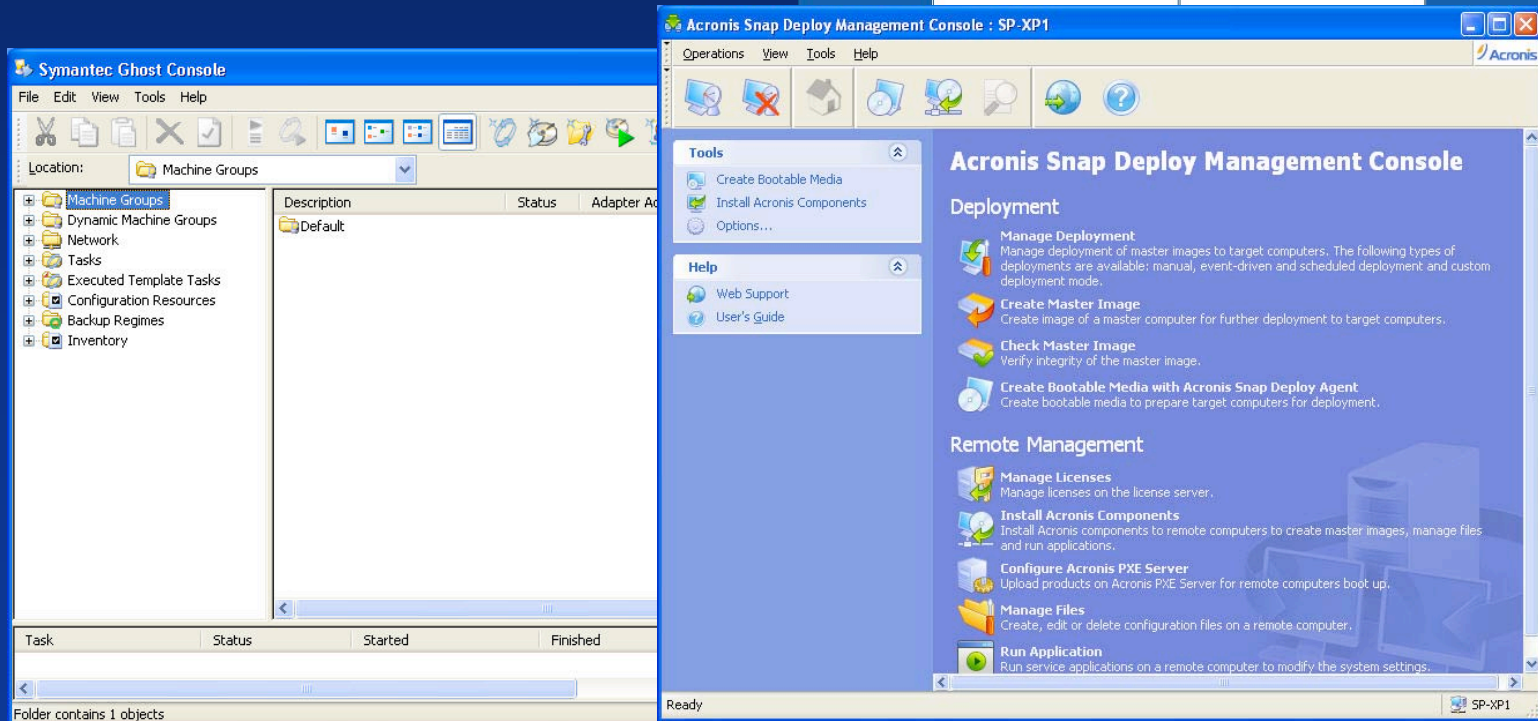
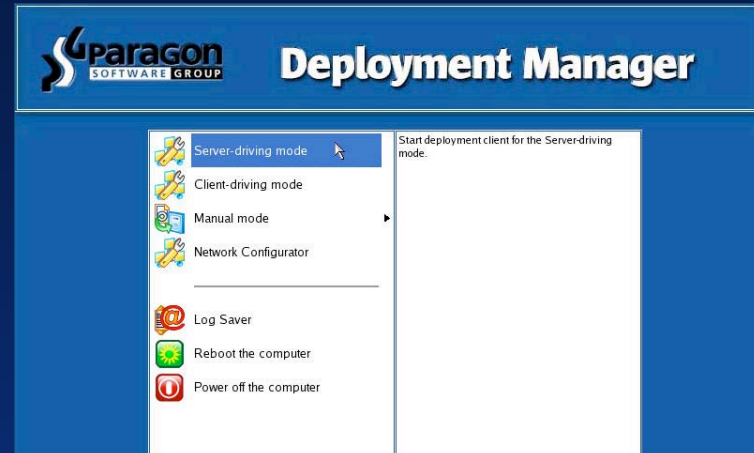
This feature allows the user to quickly clone a single partition on one drive to another drive.

Smart Cloning

Smart clone technology will automatically resize shrink or grow the original hard drive's partitions to match the new drive capacity.

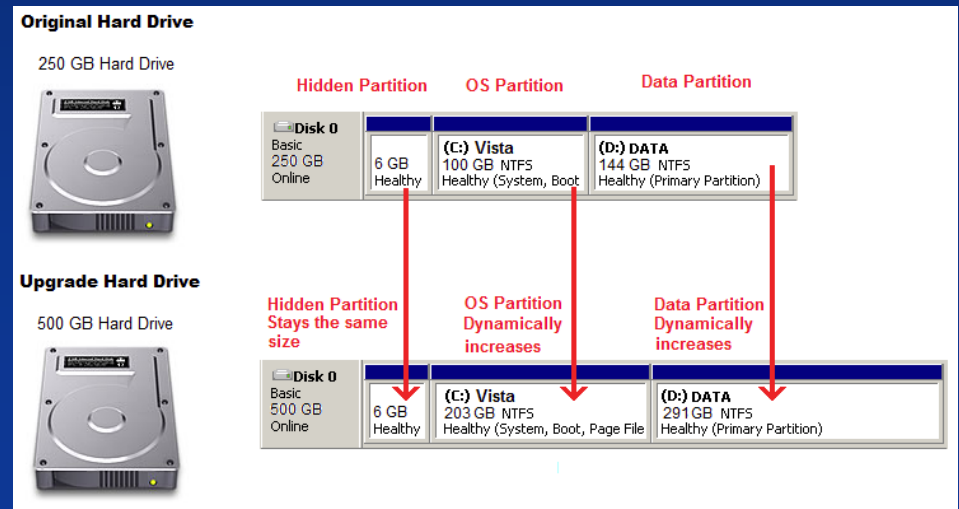
Examples of Cloning Software

- Paragon
- Symantec Ghost
- Acronis True Image
- And...



NTI Echo: Smart Cloning

- **One-Click Cloning:** Simply press Start. No need to press F12, no need for any further user interaction.
- **Easy-to-use:** Simple and friendly GUI, no antique command-line text interface!
- **Smart Cloning:** Dynamically resizes to fit onto the new storage device. Grow or shrink the partitions proportionately to use or fit all the available space on the new drive.





Thank You

Sean Stead

www.NTICorp.com

seanstead@nticorp.com