



# PCIe 2.5" Form Factor

Janene Ellefson: Micron Technology  
Product Marketing Manager – PCIe SSD

# Advantages of PCIe over SATA/SAS SSDs



Higher Performance



Lower power  
consumption



Sub \$0.10/IOPS TCO

Lots of advantages for PCIe  
Enterprise would use it more if they could

## What's Holding it Back?

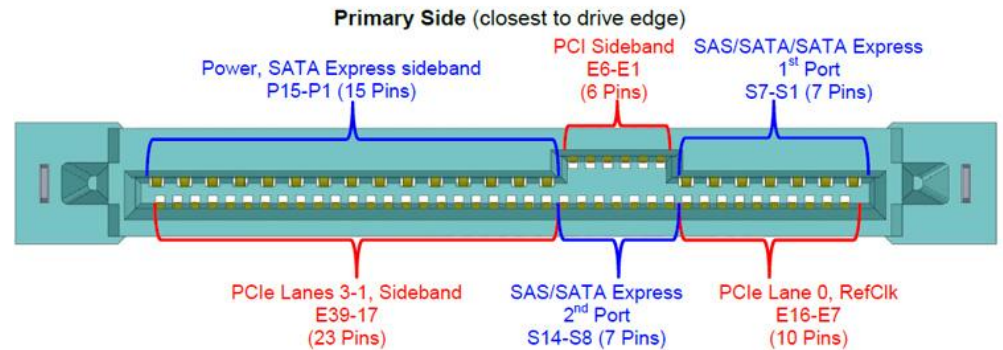


- No Hot-Swap capability
- Too much space
- Limited PCIe slots
- Power down required

Today's PCIe form factors are not optimal for Enterprise serviceability

# SSD Small Form Factor Working Group: 2.5" PCIe Focus

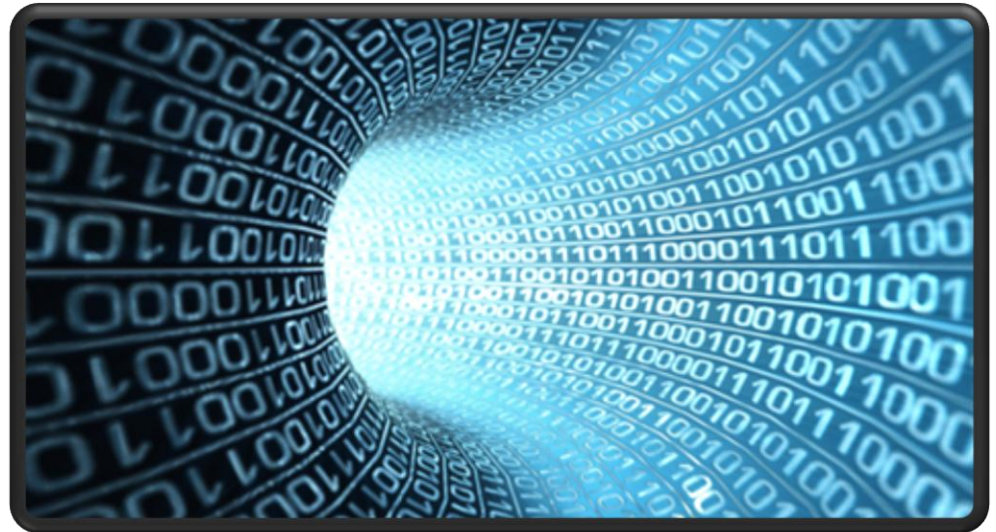
- Hot plug
- External access
- Combo connector
- PCIe performance
- Common SFF 15mm form factor
- Combo connector ([SFF-8639](http://www.sff-ta.com/standards/sff-8639))



[ssdformfactor.org](http://ssdformfactor.org)

# 2.5" Advantages

- High Performance
- Common Form Factor
- Scalability
- Rugged
- Compact



- PCIe offers performance advantages
- Today's PCIe form factors are not optimal for Enterprise serviceability
- 2.5" Form Factor: All the performance of PCIe with the serviceability standards of SATA/SAS
- 2.5" = increase PCIe adoption

