



# Are we there yet? Where are we going?

**Session 202-A**

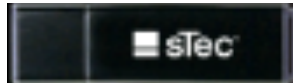
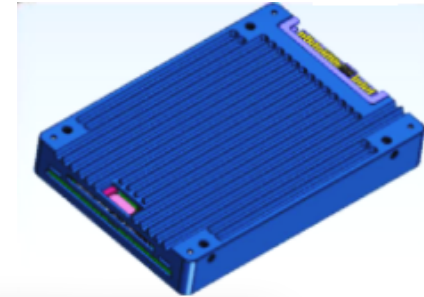
Sean Stead

sTec, Inc.

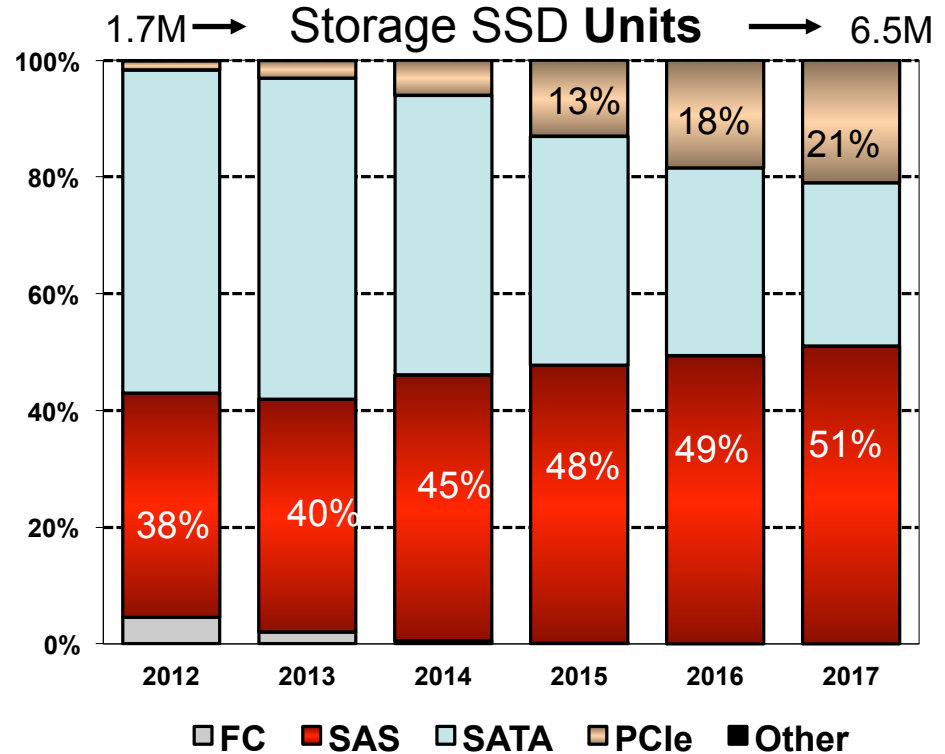
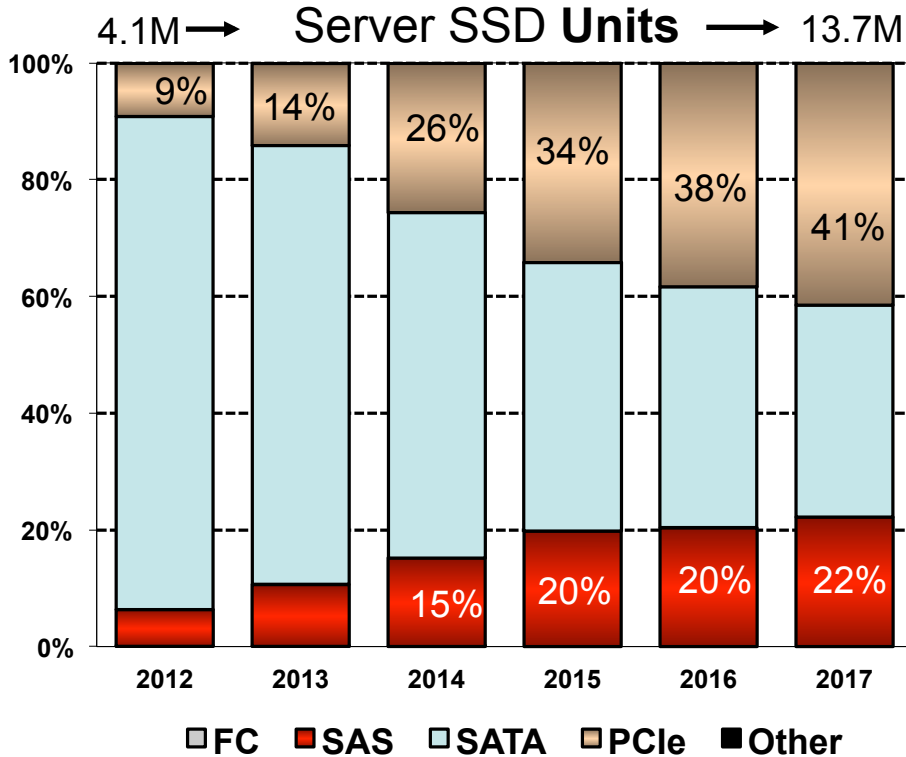
# Flash is Ubiquitous in Storage

You have are arrived when you're everywhere

- SATA 1.8", 2.5"
- SAS 1.8", 2.5"
- PCIe, NVMe
- USB
- CF, SD Cards
- Embedded

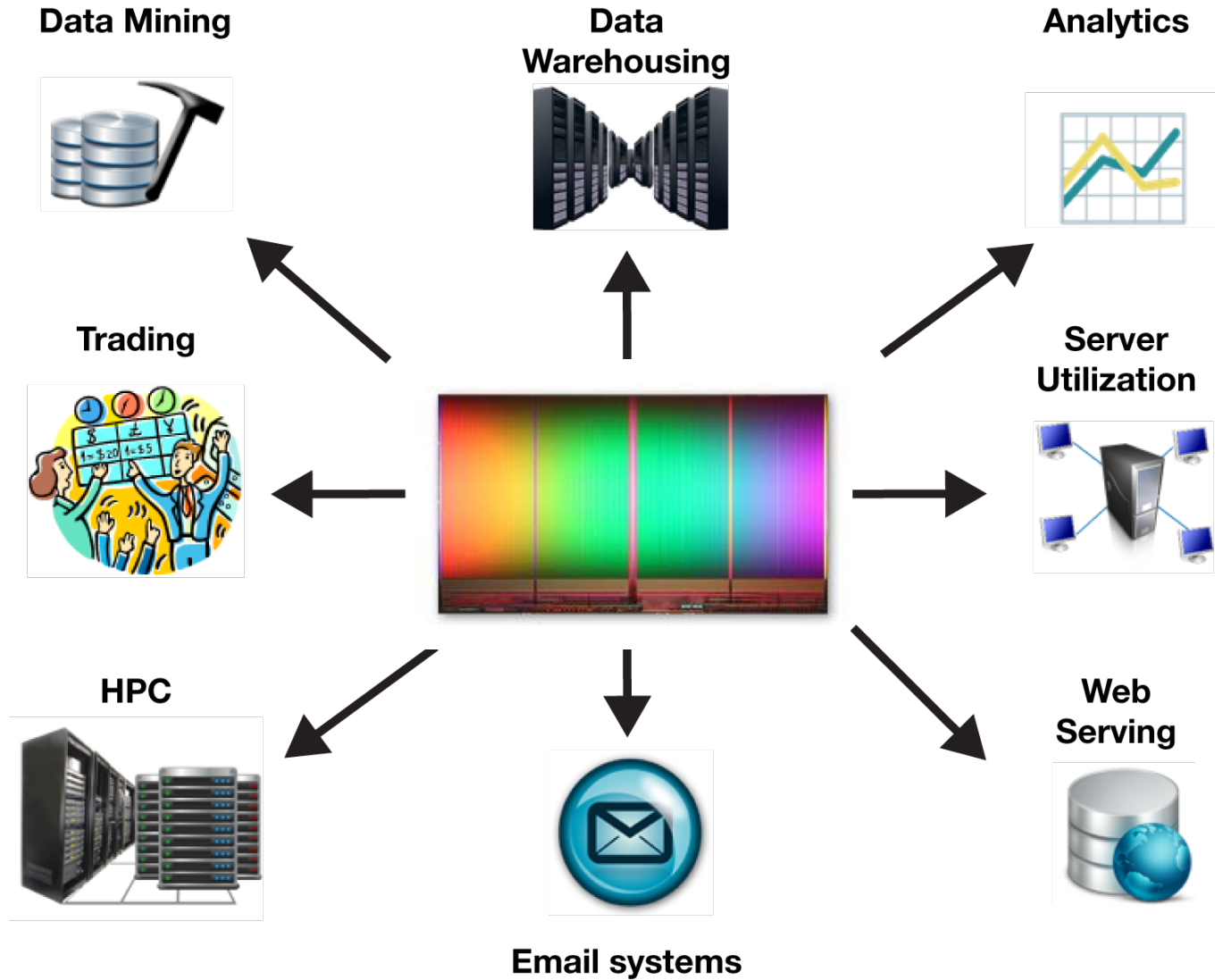


# Enterprise Flash By Interface



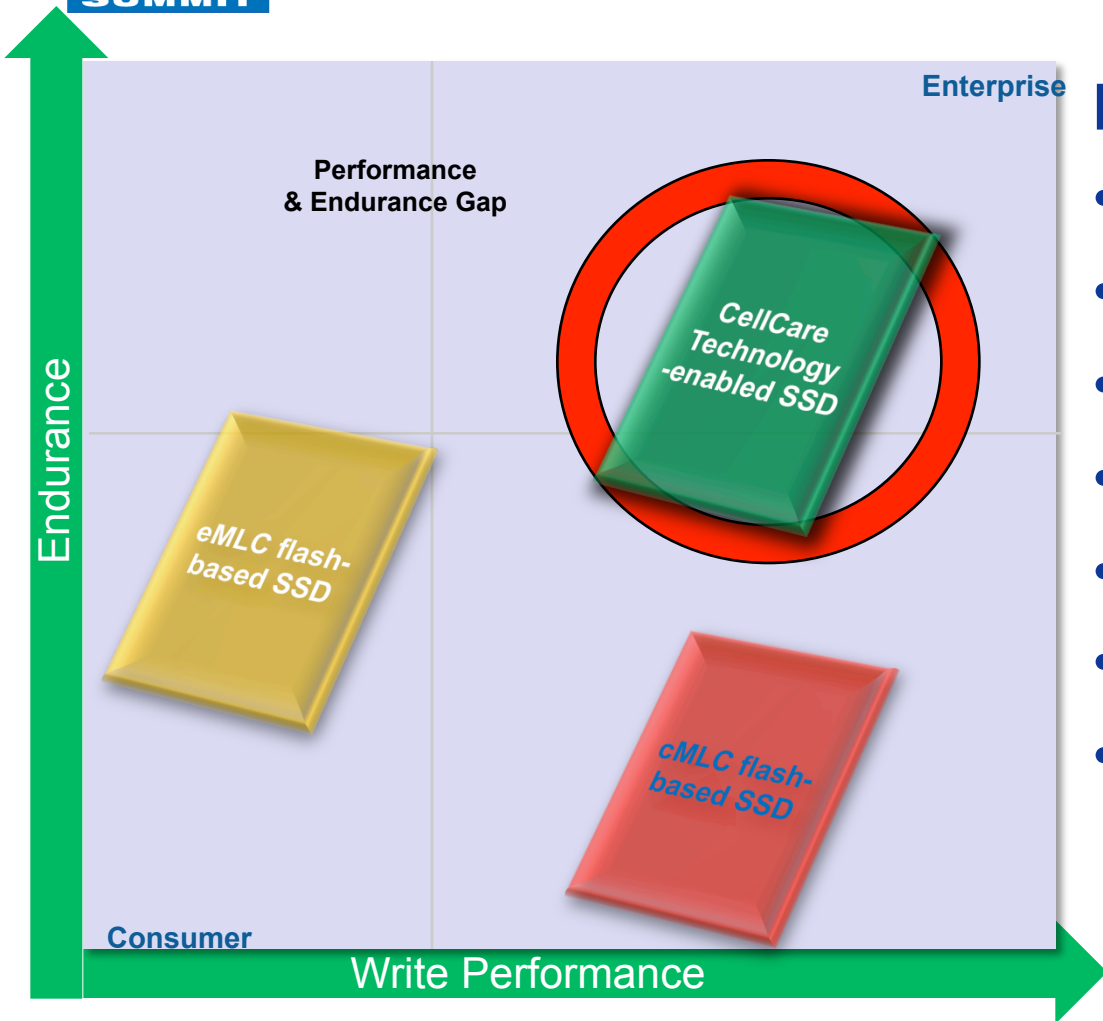
- PCIe: 34% of Total Server Shipments in 2015
  - SATA steady decline in Servers and Storage
  - SAS Continues to grow in Servers and Storage
- (source: Gartner)

# Flash Speeds Up Everything



# BUT WATCH OUT...

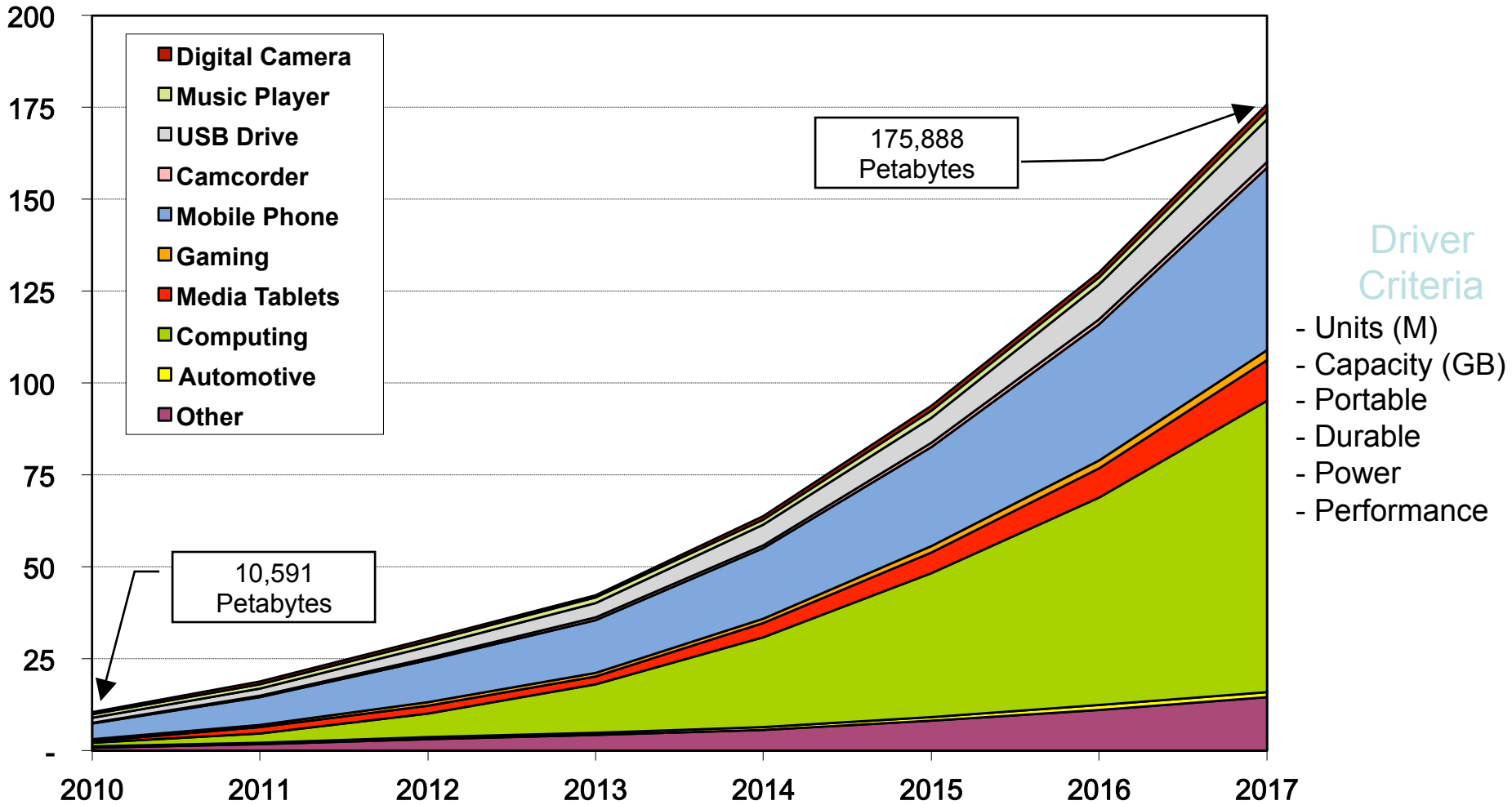
## Consumer and Enterprise: Very Different



### Enterprise Flash Needs:

- Advanced Flash Mgmt
- Digital Signal Processing
- Improved Endurance
- Improved Performance
- Constant Performance
- Increased Reliability
- ECC increases with NAND shrinkage

# NAND: So Many Devices, So Little Time



Note: NAND flash consumption includes both in-system and removable storage such as flash cards.  
Lifestyle Storage = MultiMedia Content Distribution & Optical Replacement



**Thank you**

[www.sTec-inc.com](http://www.sTec-inc.com)